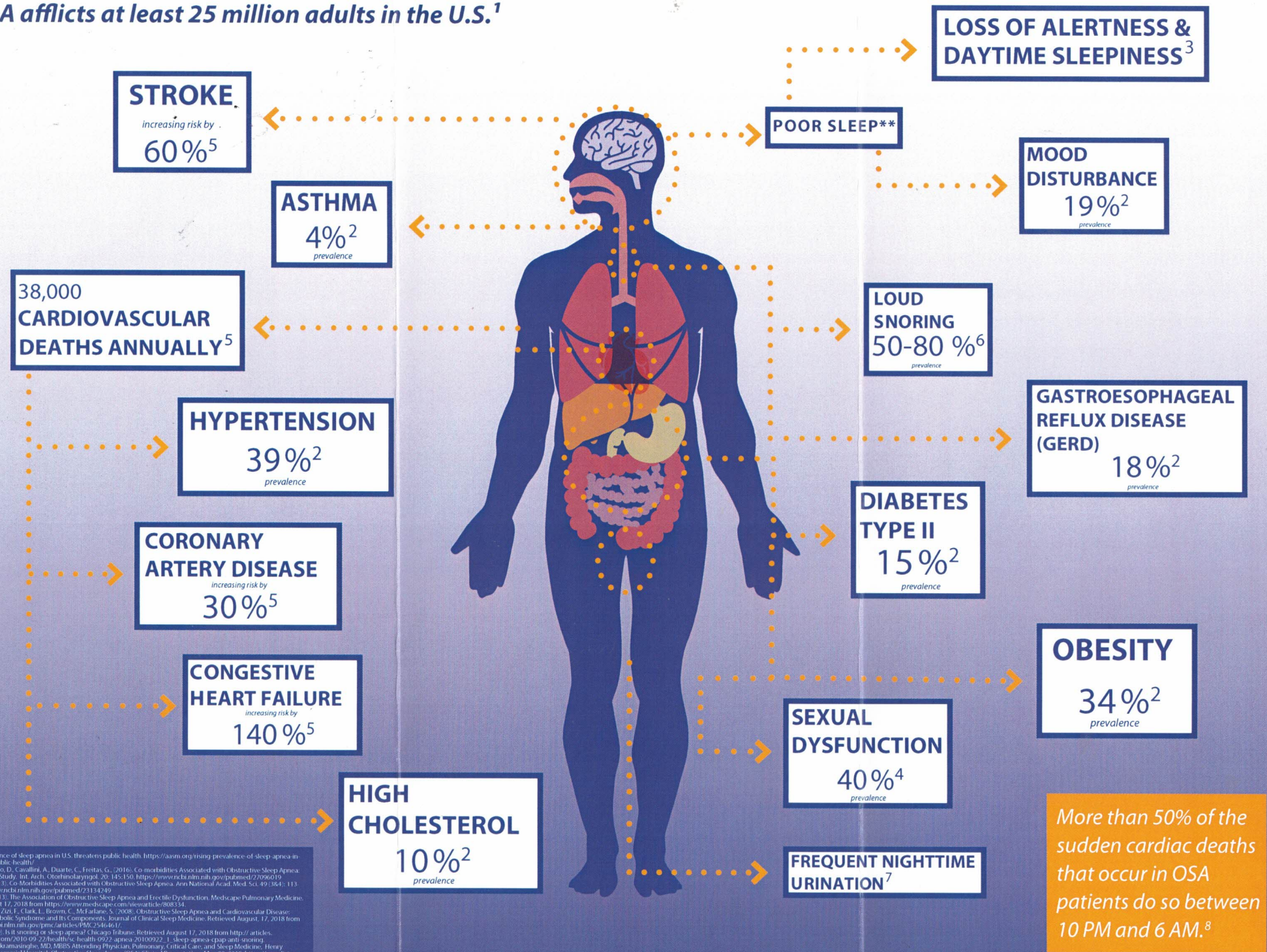


OSA afflicts at least 25 million adults in the U.S.¹



1. Rising prevalence of sleep apnea in U.S. threatens public health. <https://aasm.org/rising-prevalence-of-sleep-apnea-in-us-threatens-public-health/>
 2. Pinto, J., Ribeiro, D., Cavallini, A., Duarte, C., Freitas, G. (2016). Comorbidities Associated with Obstructive Sleep Apnea: A Retrospective Study. *Int. Arch. Otorhinolaryngol.* 20, 145-150. <https://www.ncbi.nlm.nih.gov/pubmed/27096019>
 3. Wajyan, V. (2013). Comorbidities Associated with Obstructive Sleep Apnea. *Ann National Acad. Med. Sci.* 49 (3&4): 113-121. <https://www.ncbi.nlm.nih.gov/pubmed/23134249>
 4. I. Estivi, C. (2013). The Association of Obstructive Sleep Apnea and Erectile Dysfunction. *Medscape Pulmonary Medicine*. Retrieved August 17, 2018 from <https://www.medscape.com/viewarticle/808334>
 5. Jean Louis, G., Zizi, F., Clark, L., Brown, C., McFarlane, S. (2008). Obstructive Sleep Apnea and Cardiovascular Disease: Role of the Metabolic Syndrome and Its Components. *Journal of Clinical Sleep Medicine*. Retrieved August 17, 2018 from <https://www.ncbi.nlm.nih.gov/pmc/articles/PMC2546461/>
 6. Casoy, L. (2010). Is it snoring or sleep apnea? Chicago Tribune. Retrieved August 17, 2018 from http://articles.chicagotribune.com/2010-09-22/health/sci-health-0922-apnea-20100922_1_sleep-apnea-cpap-and-snoring
 7. Himanshu Wickramasinghe, MD, MBBS Attending Physician, Pulmonary, Critical Care, and Sleep Medicine, Henry Mayo Newhall Memorial Hospital. Obstructive Sleep Apnea (OSA). Clinical Presentation, Mar. 22, 2019. <https://emedicine.medscape.com/article/296807/clinical>
 8. Himanshu Wickramasinghe, MD, MBBS Attending Physician, Pulmonary, Critical Care, and Sleep Medicine, Henry Mayo Newhall Memorial Hospital. What is the association between myocardial ischemia and infarction and obstructive sleep apnea (OSA)? Mar. 22, 2019. <https://www.medscape.com/answers/296807/33521/what-is-the-association-between-myocardial-ischemia-and-infarction-and-obstructive-sleep-apnea-osa>